



20 Kellow Street Sutton Grange VIC

2 1 3

A drive through the quintessential Australian countryside with ancient gum trees and rolling hills is the beautiful hamlet of Sutton Grange, sited at the foothills of the majestic Mount Alexander. Sutton Grange is located close to the thriving community of Harcourt, which offers a primary school, a cafe, wineries, orchards, and the La Larr Ba Gauwa world-class mountain bike track. Castlemaine is a short drive away for additional schools, retail and amenities, the train to Melbourne or Bendigo, and an easy 10-minute drive to the Calder Freeway to Melbourne. With its idyllic location, this two-bedroom home on 4.46sqm (approx) offers a low-maintenance country lifestyle.

The corrugated-clad home features entry into the spacious living with a high-raked ceiling with beams and a sunken

[For full version visit the website](https://www.cantwellproperty.com.au/sale/vic/greater-bendigo-region/sutton-grange/residential/house/8146208)

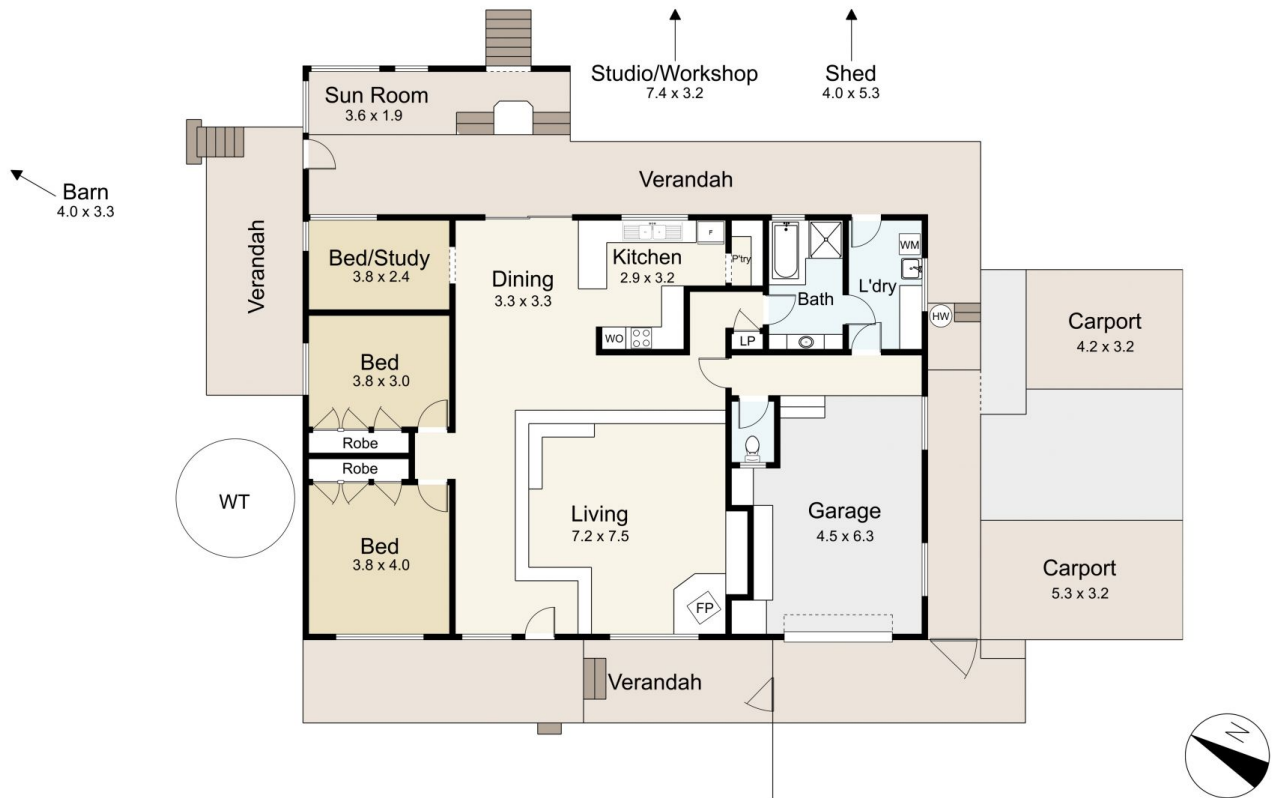
Type : House
Price : \$695,000
Building Size : 182 sqm
Land Size : 4046 sqm
View : <https://www.cantwellproperty.com.au/sale/vic/greater-bendigo-region/sutton-grange/residential/house/8146208>



Megan Walmsley
03 5472 1122



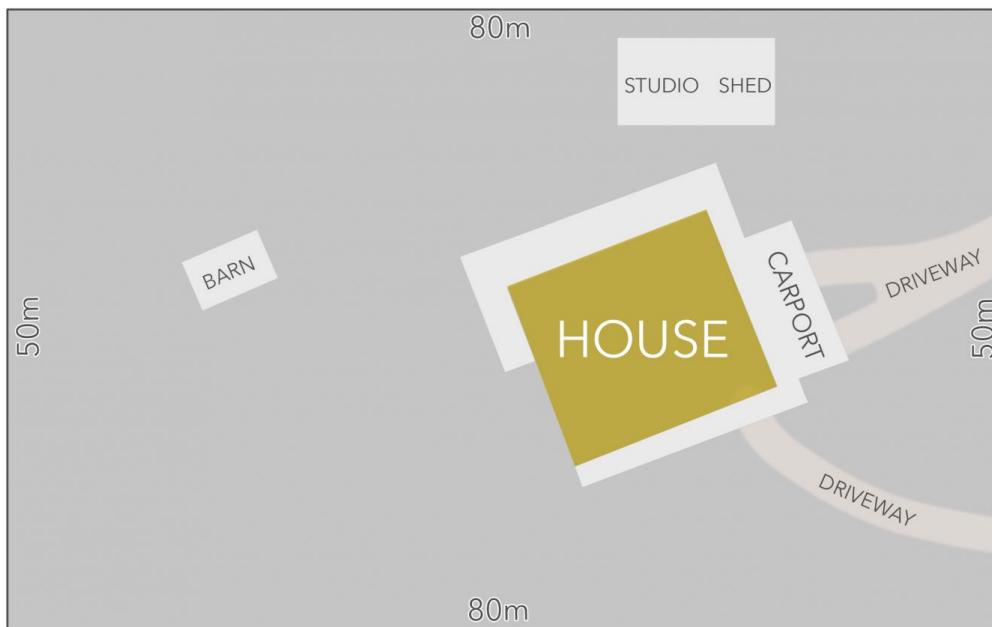
Nick Haslam
03 5472 1122



20 Kellow Street, Sutton Grange

SCALE UNIT IS IN METRES
 All measurements are approximate and for illustration purposes only. It should not be considered 100% accurate. Interested parties should rely on their own enquiries.

Residence - 182m²
 Studio/Shed - 45m²



LAND AREA : 4046m² (APPROX)



20 Kellow Street, Sutton Grange

All Measurements & Details Shown Are Approximate Only.