



**17 Gordons Road Welshmans Reef VIC**

3 1 2

This 4.6 acre (approx) lifestyle three-bedroom property with a two street frontage offers the escape to the country, with the added benefit of Cairn Curran Reservoir (a 2-minute drive away) or 7 minutes by bike for recreational water sports, sailing or fishing. Historic Maldon is 7 minutes away, Newstead 5 minutes, Castlemaine, with its train service to Melbourne, is 20 minutes, and Bendigo is 40 minutes.

The floorplan features an open-plan kitchen with dining and living. The country-style kitchen features a freestanding gas cooktop with an oven, storage, a dishwasher and a north-facing window that provides lovely garden views. The living/ dining space has an air-conditioner, a timber feature wall and a large window to the south. A second living room

**Type** : House  
**Price** : \$695,000  
**Building Size** : 158 sqm  
**Land Size** : 4.6 Acres  
**View** : <https://www.cantwellproperty.com.au/sale/vic/greater-bendigo-region/welshmans-reef/residential/house/8146087>

[For full version visit the website](#)

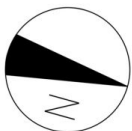
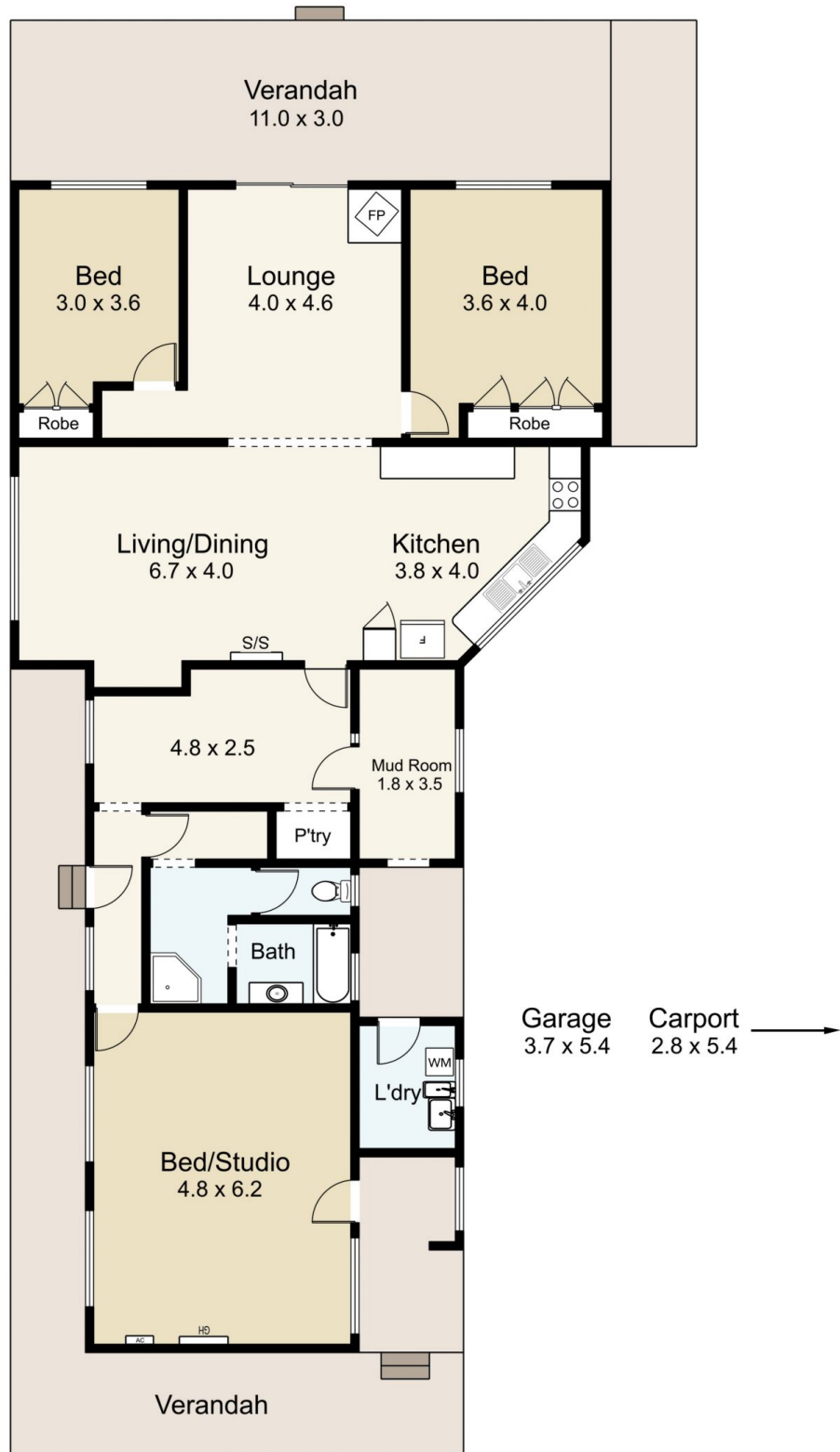


**Megan Walmsley**  
03 5472 1122



**Nick Haslam**  
03 5472 1122

WT

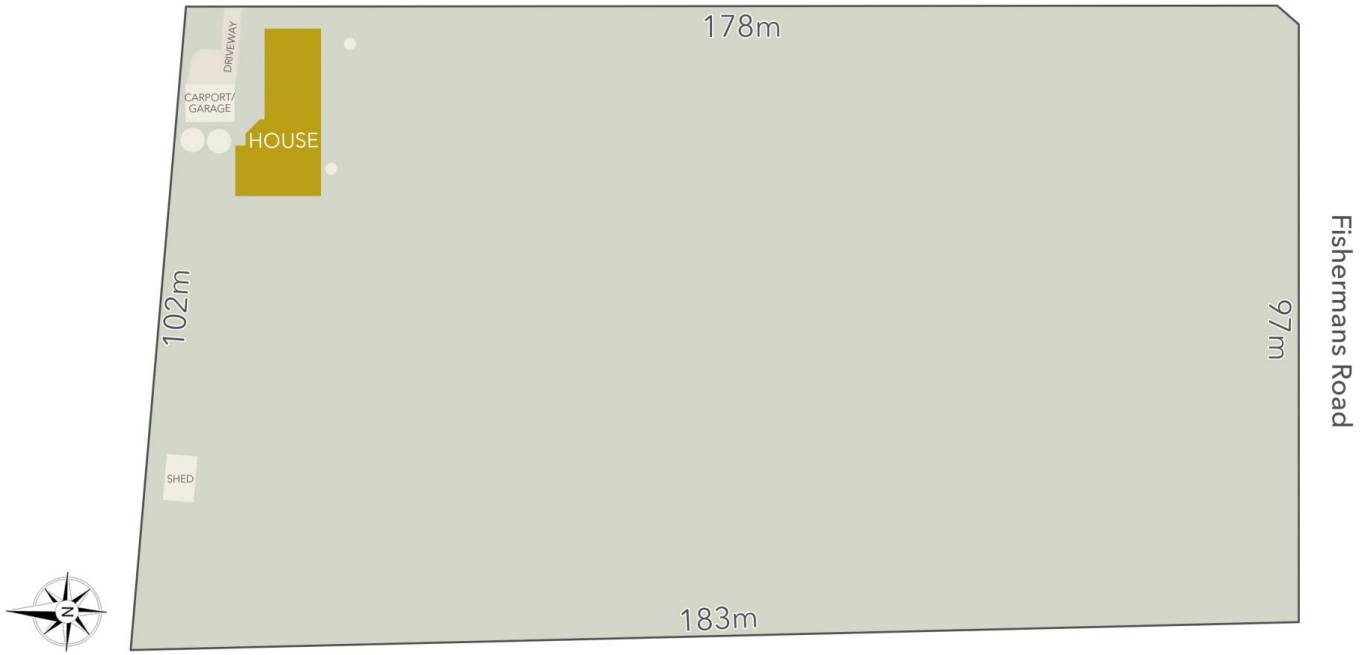


# 17 Gordons Road, Welshmans Reef

SCALE UNIT IS IN METRES  
All measurements are approximate and for illustration purposes only. It should not be considered 100% accurate. Interested parties should rely on their own enquiries.

Residence - 158m<sup>2</sup>

Gordons Road



LAND AREA : 4.6Acres (APPROX)

**cantwell**<sup>MM</sup>  
property

17 Gordons Road, Welshmans Reef

All Measurements & Details Shown Are Approximate Only.