



16 Templeton Street Guildford VIC

3 1 3

This much-loved three-bedroom Western Red Cedar home, elevated within its landscape with sweeping views of the picturesque Guildford landscape and the flow of the Loddon River, offers family-friendly living in an idyllic country setting. Welcome to Guildford Palace, a generous 2878 sqm (approx) property on two titles within walking distance to the Guildford Hotel, the Guildford General Store (re-opening soon), the Post Office, a sporting reserve, and a 10-minute drive to Castlemaine and 20 minutes to Daylesford for additional retail, restaurants and other amenities including the Steiner School.

The welcoming home features a spacious open-plan living room with dining providing striking timber wall panelling, a wall-to-wall built-in bookcase, timber floorboards, a spilt

[For full version visit the website](#)

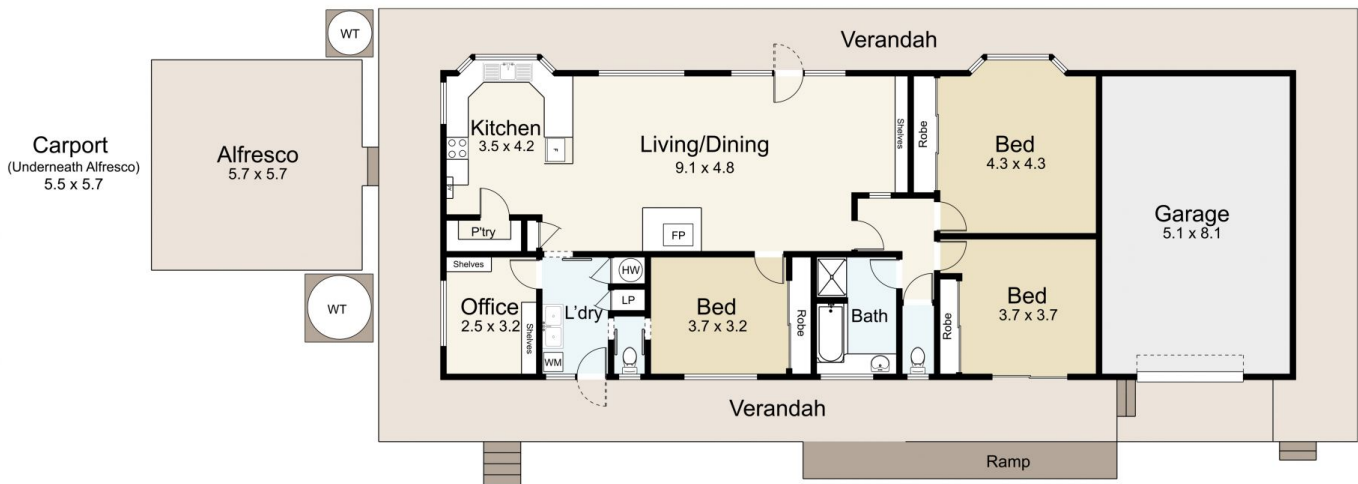
Type : House
Price : \$725,000
Building Size : 142 sqm
Land Size : 2878 sqm
View : <https://www.cantwellproperty.com.au/sale/vic/greater-bendigo-region/guildford/residential/house/8128233>



Nick Haslam
03 5472 1122



Megan Walmsley
03 5472 1122

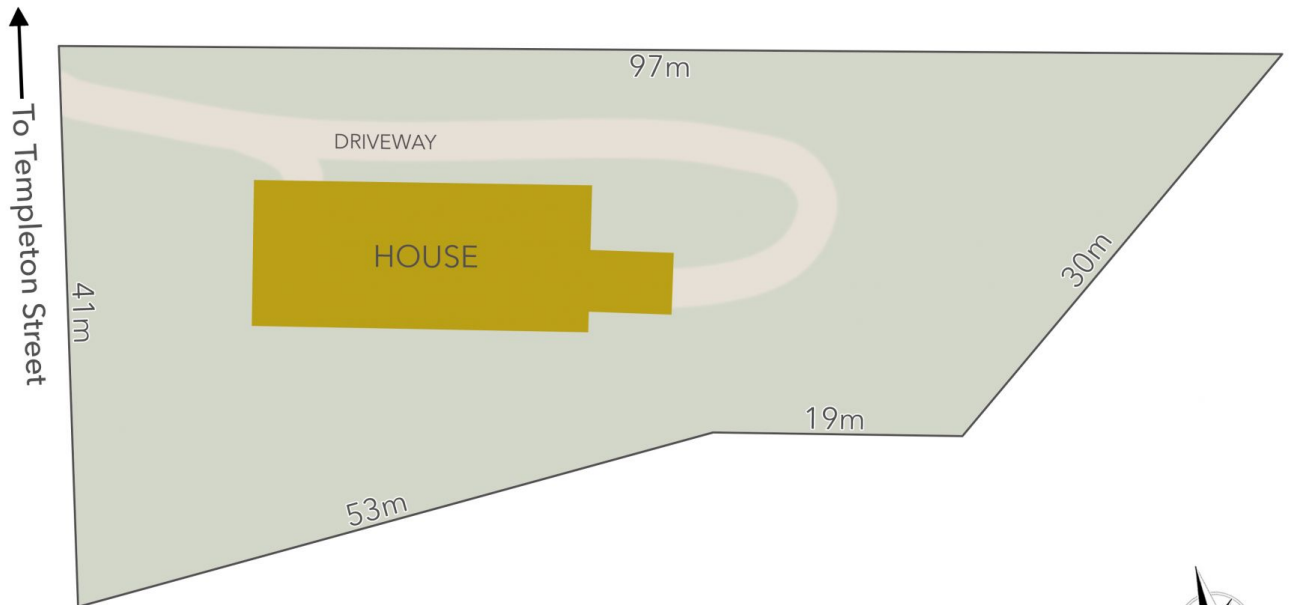


16 Templeton Street, Guildford

SCALE UNIT IS IN METRES
 All measurements are approximate and for illustration purposes only. It should not be considered 100% accurate. Interested parties should rely on their own enquiries.

Residence - 142m²

Garage - 42m²



LAND AREA : 2878m² (APPROX)



16 Templeton Street, Guildford

All Measurements & Details Shown Are Approximate Only.