



8645 Midland Highway Barkers Creek VIC

3 1 5

Welcome to this charming country property, brimming with opportunity. Retro vibes meet modern comforts in the delightful circa 1960s home, a light-filled, open-plan studio for business (STCA) or pleasure and a decent-sized shed, all located on a spacious 1.7 acres (approx). With the charm of Barkers Creek at your boundary, connect with nature under shady gums in the private, parklike greenscape. A short drive to Castlemaine for retail, amenities, schools, or the 1.5 hr train to Melbourne. Well positioned for easy access to the Melbourne-Bendigo Calder freeway.

The circular driveway leads to a wide vine-covered verandah and pergola, framing the entrance to the property. Enter the open-plan living room with dining and a

Type : House
Price : \$ 615,000
Building Size : 93 sqm
Land Size : 1.7 Acres
View : <https://www.cantwellproperty.com.au/sale/vic/greater-bendigo-region/barkers-creek/residential/house/8105228>

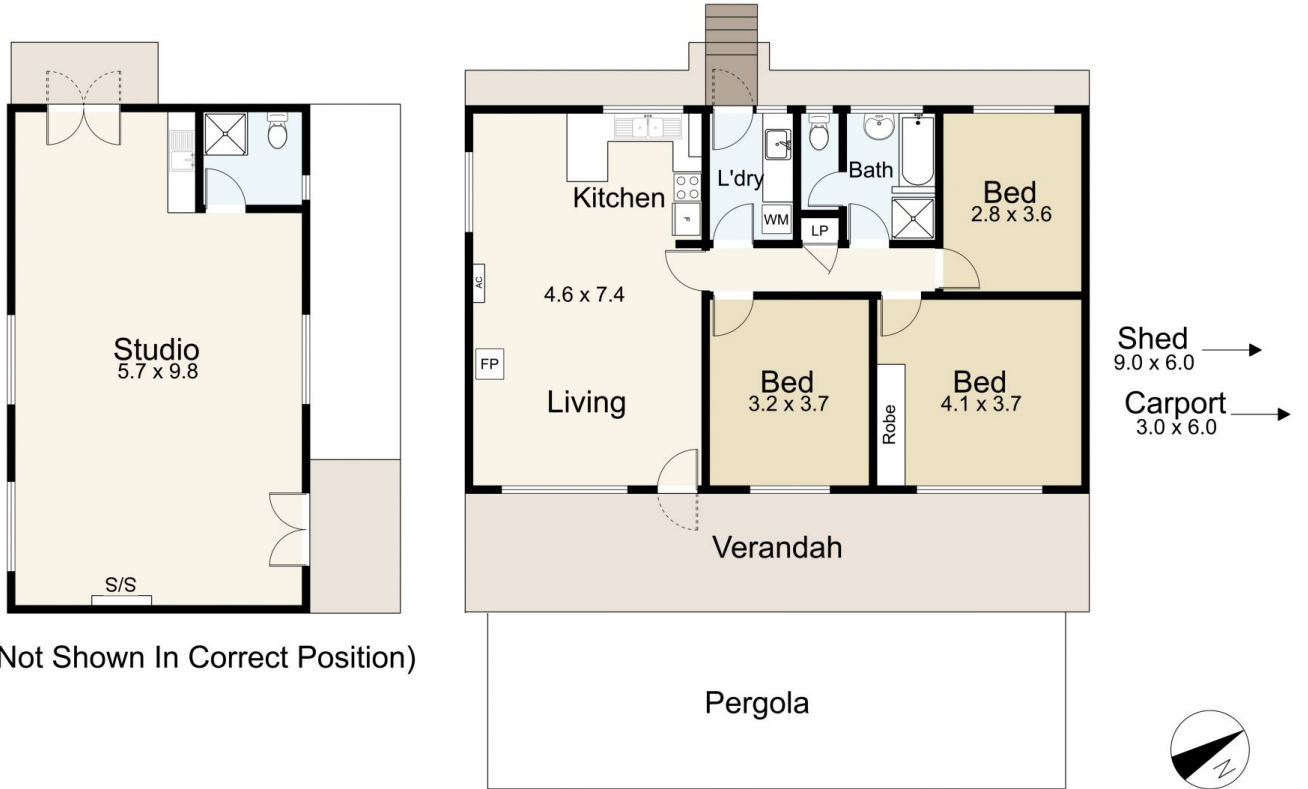


Nick Haslam
03 5472 1122



Megan Walmsley
03 5472 1122

[For full version visit the website](https://www.cantwellproperty.com.au)



8645 Midland Highway, Barkers Creek

SCALE UNIT IS IN METRES

All measurements are approximate and for illustration purposes only. It should not be considered 100% accurate. Interested parties should rely on their own enquiries.

Residence - 93m²
Studio - 56m²



LAND AREA : 1.7Acres (APPROX)



8645 Midland Highway, Barkers Creek

All Measurements & Details Shown Are Approximate Only.