

### 5 Templeton Street Guildford VIC

1 1

Capture the potential with this pretty 3159 sqm (approx) corner allotment property in the pretty town of Guildford. Situated within a 15-minute drive from Castlemaine and 20 minutes to Daylesford, Guildford offers the Delmenico's Hotel, the Guildford General Store, a Post Office, a sporting reserve, and easy access to Castlemaine and Daylesford for additional retail, restaurants and other amenities, including schools and the train to Melbourne or Bendigo from Castlemaine.

With stunning views of the surrounding landscape, this unique property offers a one-bedroom cabin with north-facing living, a gas heater, evaporative cooling, an open-plan kitchen with a bar-style bench, a freestanding gas cooktop, and storage. The bedroom has built-in robes and an ensuite with a shower over the bath, a toilet and a vanity. The cabin offers onsite living potential whilst you

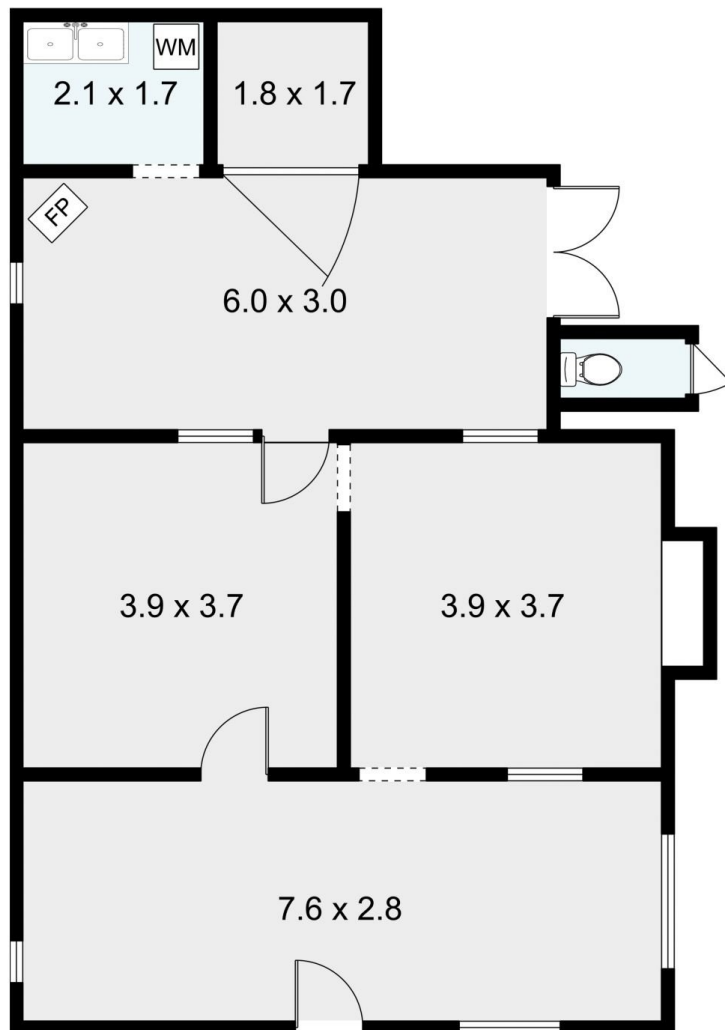
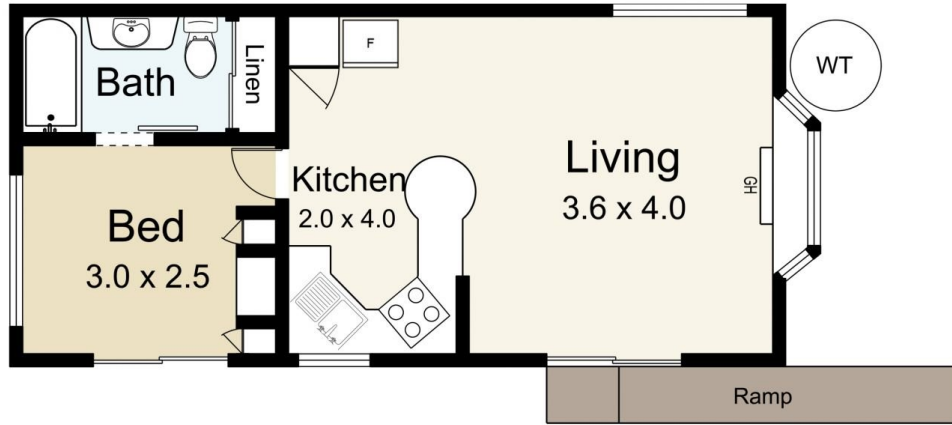
**Price** : \$395,000  
**Building Size** : 34 sqm  
**Land Size** : 3159 sqm  
**View** : <https://www.cantwellproperty.com.au/sale/vic/greater-bendigo-region/guildford/residential/house/8097744>



**Megan Walmsley**  
03 5472 1133



**Tom Robertson**  
03 5472 1133

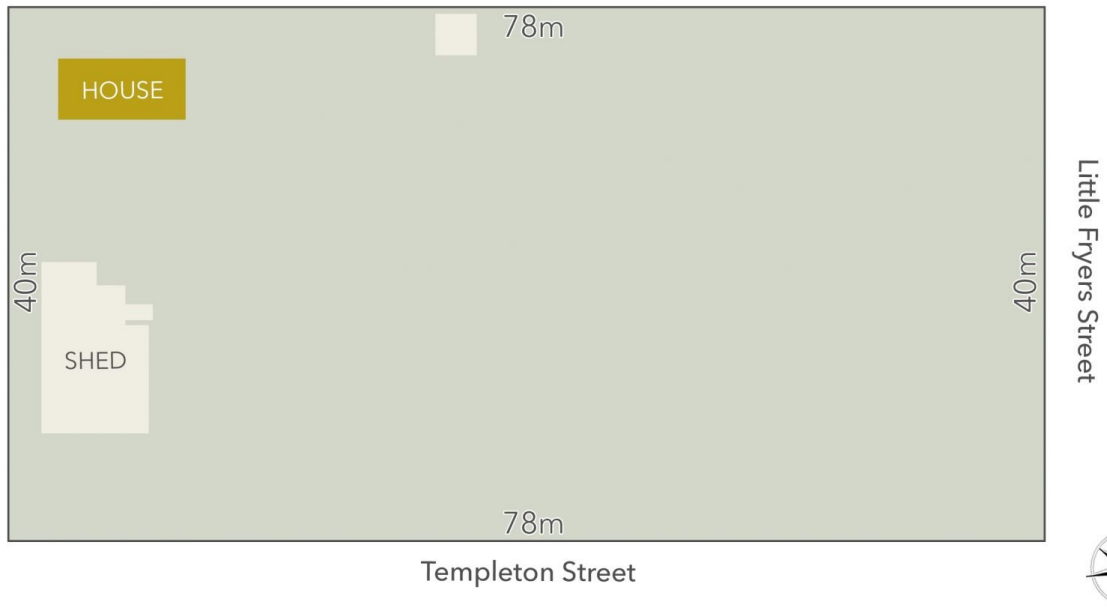


**cantwell**<sup>MM</sup>  
property

## 5 Templeton Street, Guildford

SCALE UNIT IS IN METRES  
All measurements are approximate and for illustration purposes only. It should not be considered 100% accurate. Interested parties should rely on their own enquiries.

Residence - 34m<sup>2</sup>  
Shed - 78m<sup>2</sup>



LAND AREA : 3159m<sup>2</sup> (APPROX)



## 5 Templeton Street, Guildford

All Measurements & Details Shown Are Approximate Only.