



59 Doveton Street Castlemaine VIC

2 1

This charming, light-filled two-bedroom weatherboard property on 386 sqm (approx.) is located in a highly sought-after pocket of Castlemaine and within walking distance of the train station, the central hub of Castlemaine for retail and restaurants and North Castlemaine Primary School and Castlemaine Secondary College.

Price : \$625,000
Building Size : 114 sqm
Land Size : 386 sqm
View : <https://www.cantwellproperty.com.au/sale/vic/greater-bendigo-region/castlemaine/residential/house/8096078>

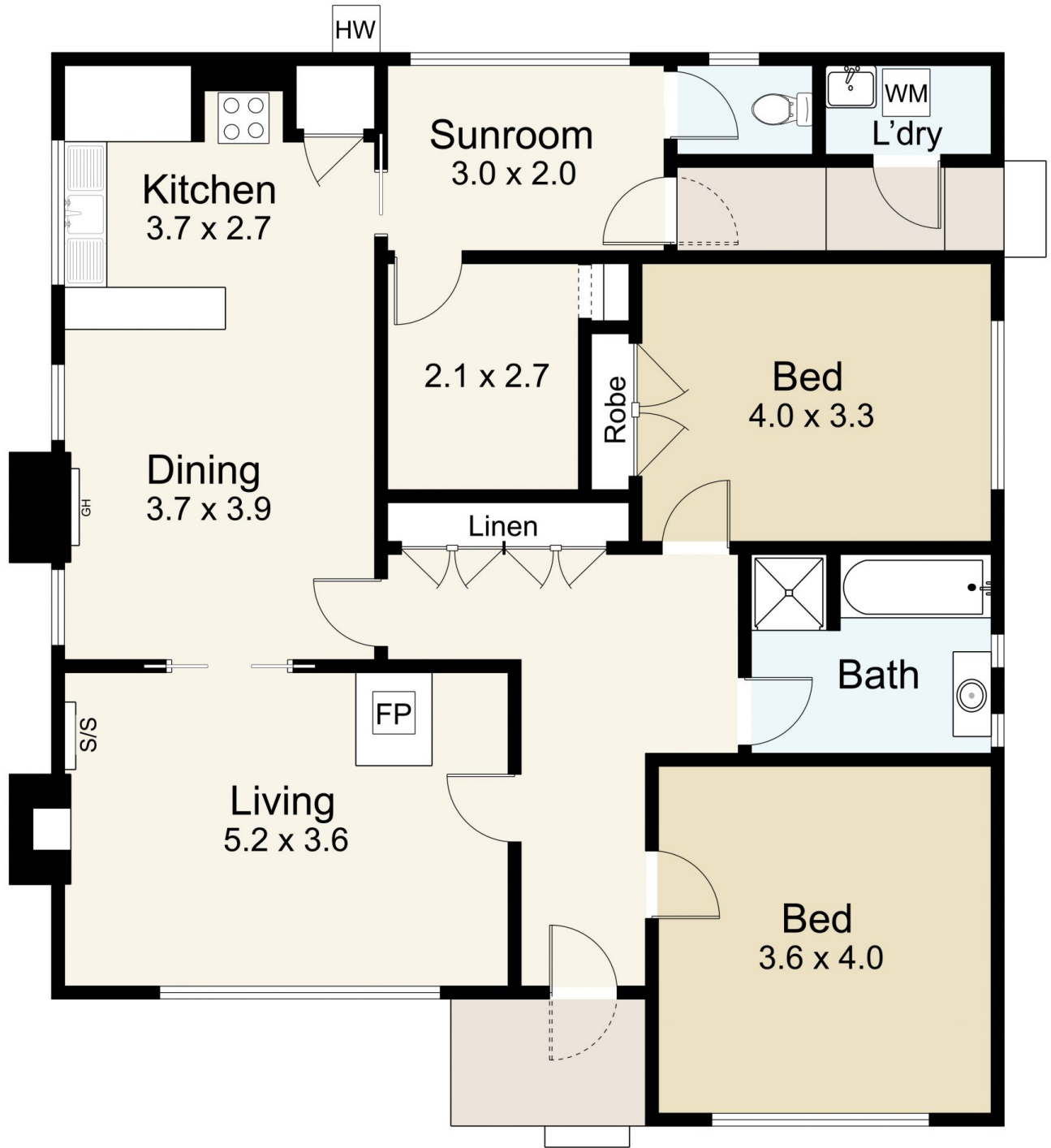
The floor plan features a spacious living room with a solid wood heater, a split system, a large window that captures the front garden and a fireplace with a period brick surround that adds a touch of character to the space. Sliding doors open into the open plan dining with kitchen. The dining space features another period fireplace, complete with a brick surround and a gas inset heater, and the kitchen has a freestanding gas cooktop, a pantry and period cabinetry.



Nick Haslam
03 5472 1133



Megan Walmsley
03 5472 1133



59 Doveton Street, Castlemaine

SCALE UNIT IS IN METRES
 All measurements are approximate and for illustration purposes only. It should not be considered 100% accurate. Interested parties should rely on their own enquiries.

Residence - 114m²