



12 Shilney Court Campbells Creek VIC

4 2 2

This well-maintained and low-maintenance four-bedroom home on 972sqm (approx) located in a quiet and family-friendly estate is within walking distance of all that Campbells Creek provides, the Five Flags Hotel, a primary school, the Five Flags Merchants, a post office, the Campbells Creek Recreation Reserve and a short drive into Castlemaine for additional retail and amenities.

Price : \$775,000
Building Size : 154 sqm
Land Size : 972 sqm
View : <https://www.cantwellproperty.com.au/sale/vic/greater-bendigo-region/campbells-creek/residential/house/8093773>

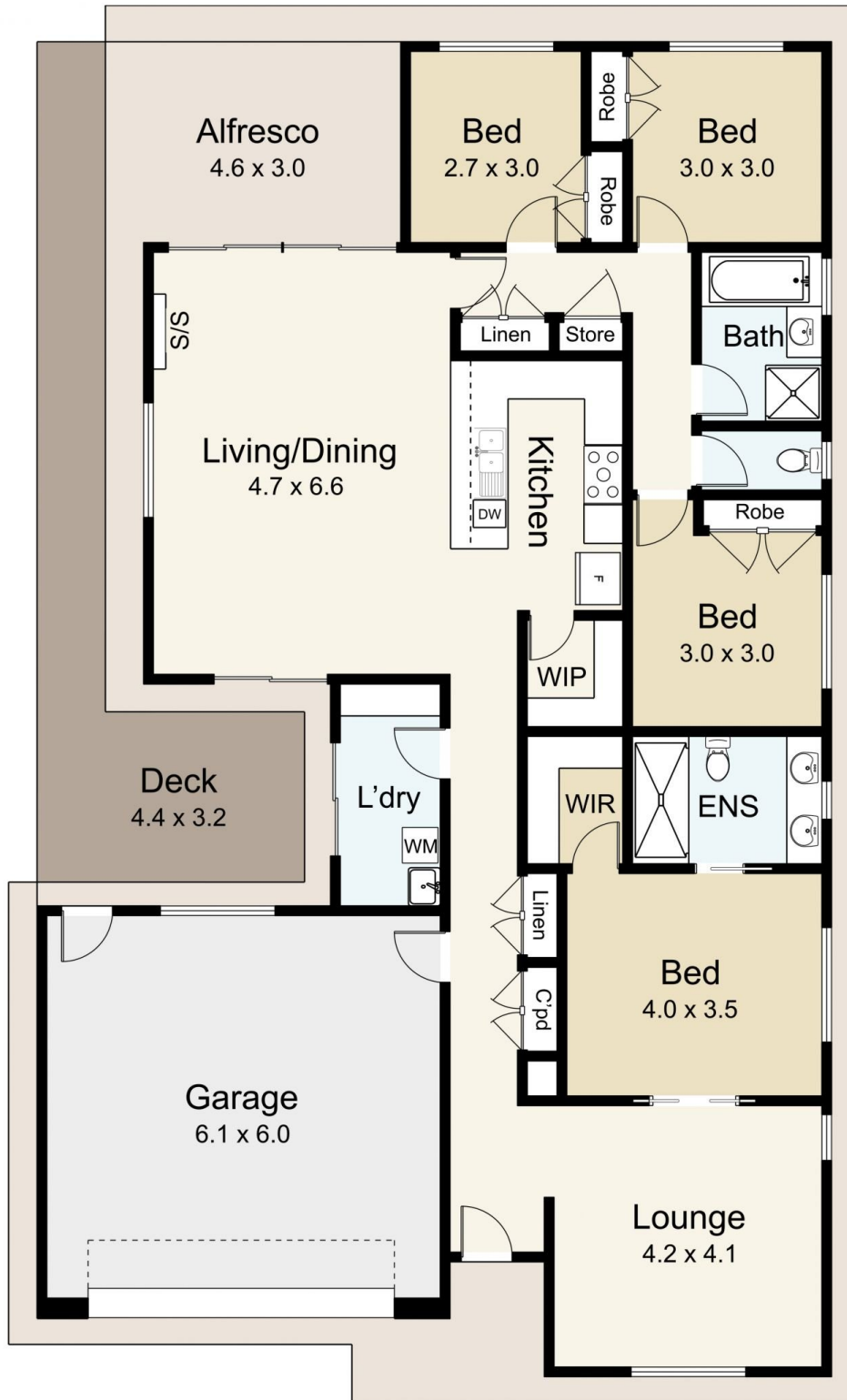
A central hall leads to a spacious north-facing open-plan kitchen with living and dining. The kitchen provides a walk-in pantry, a 900mm freestanding gas cooktop with an oven, a dishwasher, and a return bench for bar-style seating. The living space has external access to a wrap-around deck, and the dining features a split system and sliding door access to a covered 4.6m x 3m deck with external blinds, perfect for entertaining and taking in the views of the surrounding landscape.



Megan Walmsley
03 5472 1133



Tom Robertson
03 5472 1133

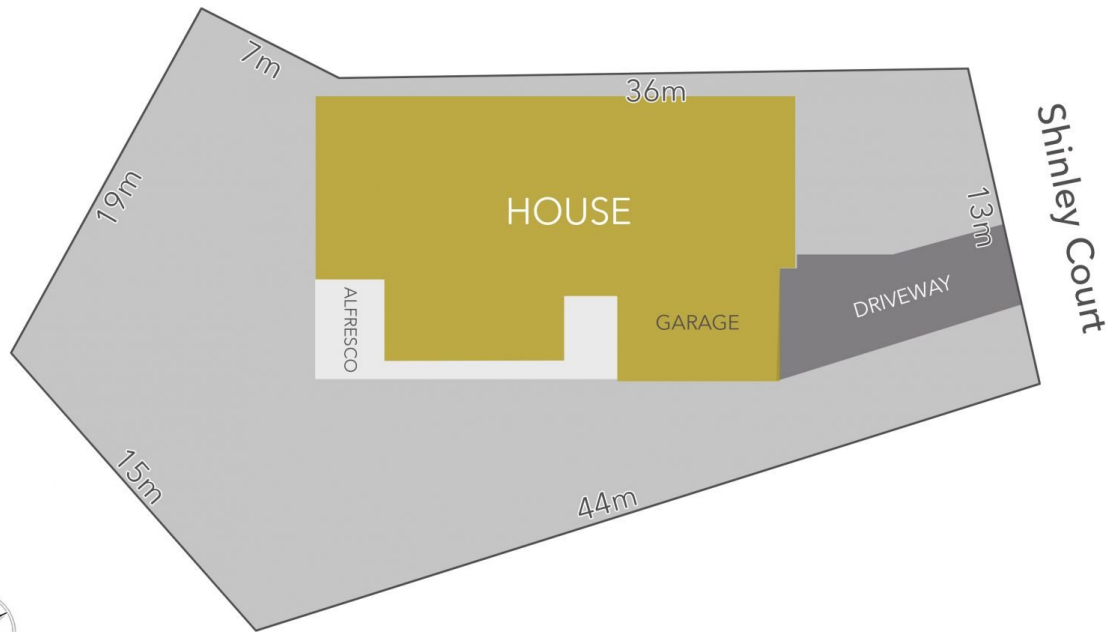


cantwell^{MM}
property

12 Shilney Court, Campbells Creek

SCALE UNIT IS IN METRES
All measurements are approximate and for illustration purposes only. It should not be considered 100% accurate. Interested parties should rely on their own enquiries.

Residence - 154m²
Garage - 37m²



LAND AREA : 972m² (APPROX)



12 Shilney Court, Campbells Creek

All Measurements & Details Shown Are Approximate Only.