



129 Cemetery Road Elphinstone VIC

2 1 4

Embrace the tranquillity of life with this circa late 1970s mudbrick home nestled on 24.85 acres (approx.) of private bushland with an abundance of wildlife and the song of birds. On two separate titles, this property makes for the ideal weekend retreat or home base and a unique opportunity just minutes away from Elphinstone, a short drive to Castlemaine, Malmesbury, and Kyneton and easy access to the Calder Freeway for Melbourne (70 minutes) and Bendigo (30 minutes).

With ecological principles and a timeless design that connects with its environment, the home built from mudbrick construction provides natural insulation and thermal regulation, and its orientation to the north maximises solar gain. The floorplan features entry into the kitchen with rustic period style timber cabinetry, timber and tiled benches, a freestanding gas cooktop with an oven

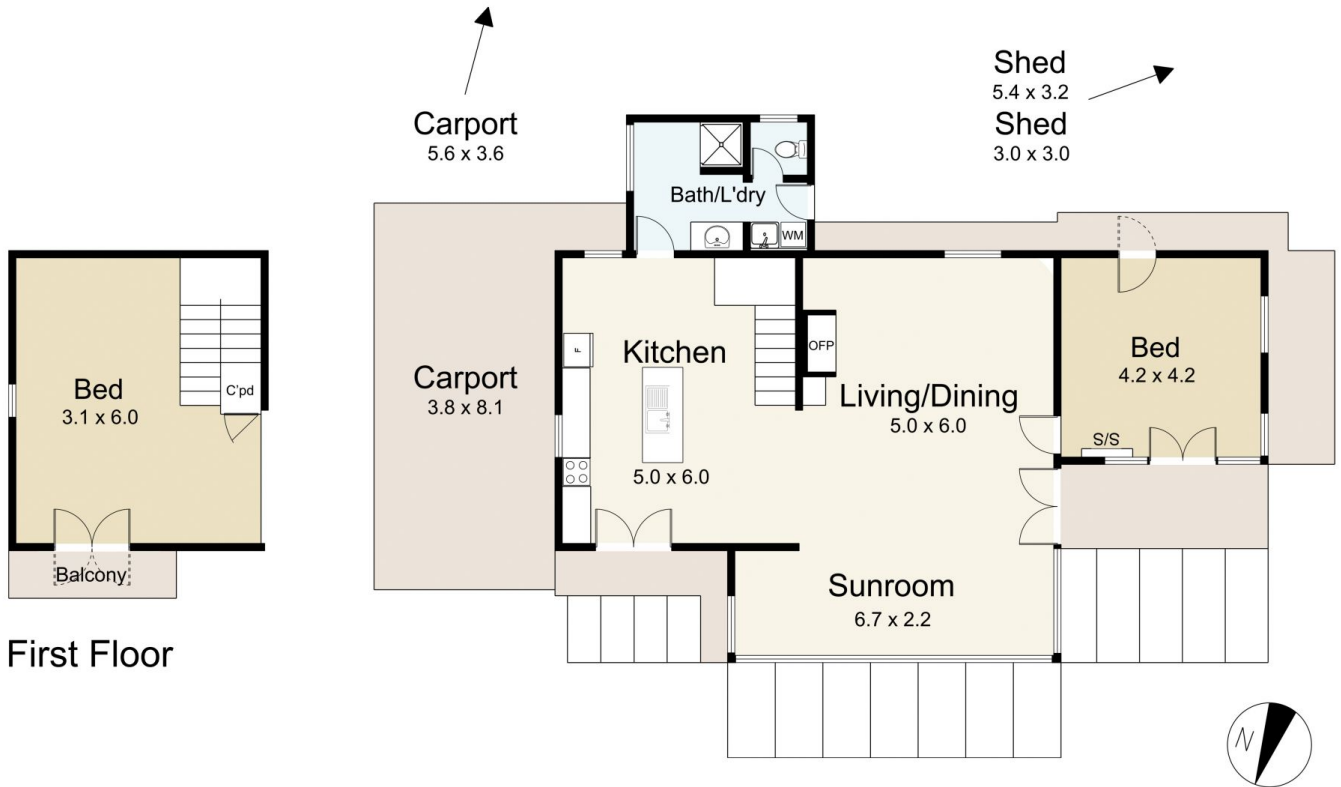
Price : \$895,000
Building Size : 135 sqm
Land Size : 24.85 Acres
View : <https://www.cantwellproperty.com.au/sale/vic/greater-bendigo-region/elphinstone/residential/house/8089305>



Nick Haslam
03 5472 1133



Megan Walmsley
03 5472 1133

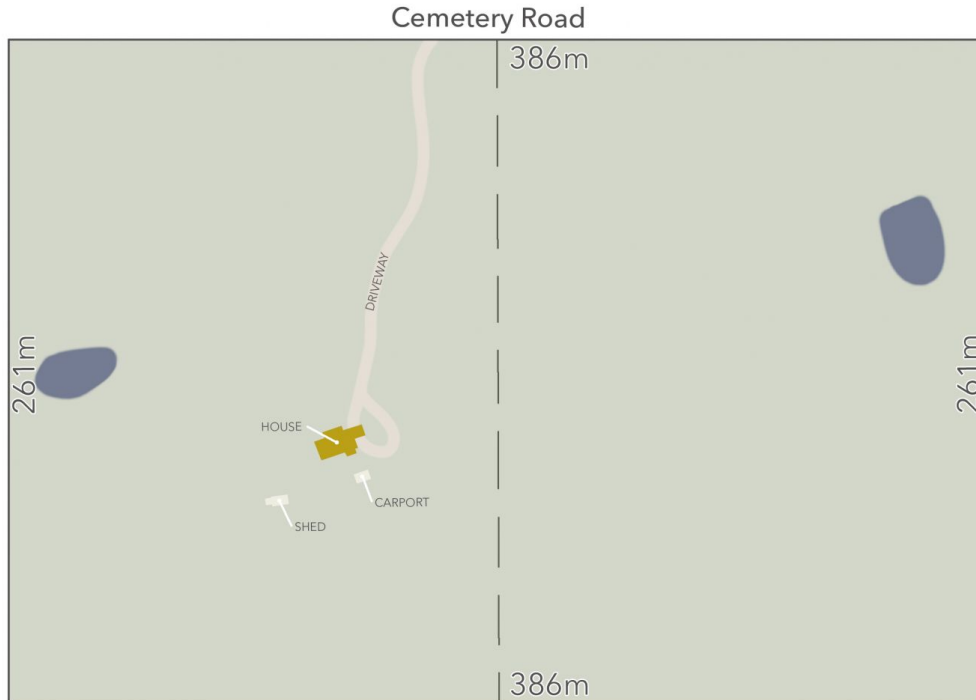


129 Cemetery Road, Elphinstone

SCALE UNIT IS IN METRES
All measurements are approximate and for illustration purposes only. It should not be considered 100% accurate. Interested parties should rely on their own enquiries.

Residence - 135m²

Carports - 51m²



LAND AREA : 24.85Acres (APPROX)



129 Cemetery Road, Elphinstone

All Measurements & Details Shown Are Approximate Only.