



**37 Boundary Road Maldon VIC**

3 1 2

Are you looking for a fantastic opportunity to double your options in the property market? On offer is this three-bedroom period home and, being sold separately, the possibility to purchase a 1140sqm warehouse on 4755sqm (approx). The 808sqm (approx) property has a beautiful view of Mount Tarrengower and only 850m into central historic Maldon for retail, cafes, and activities such as the Victorian Goldfields Railway, Cairn Curran Reservoir, Porcupine Village, and the Goldfields walking tracks.

**Price** : \$495,000  
**Building Size** : 122 sqm  
**Land Size** : 808 sqm  
**View** : <https://www.cantwellproperty.com.au/sale/vic/greater-bendigo-region/maldon/residential/house/7920083>

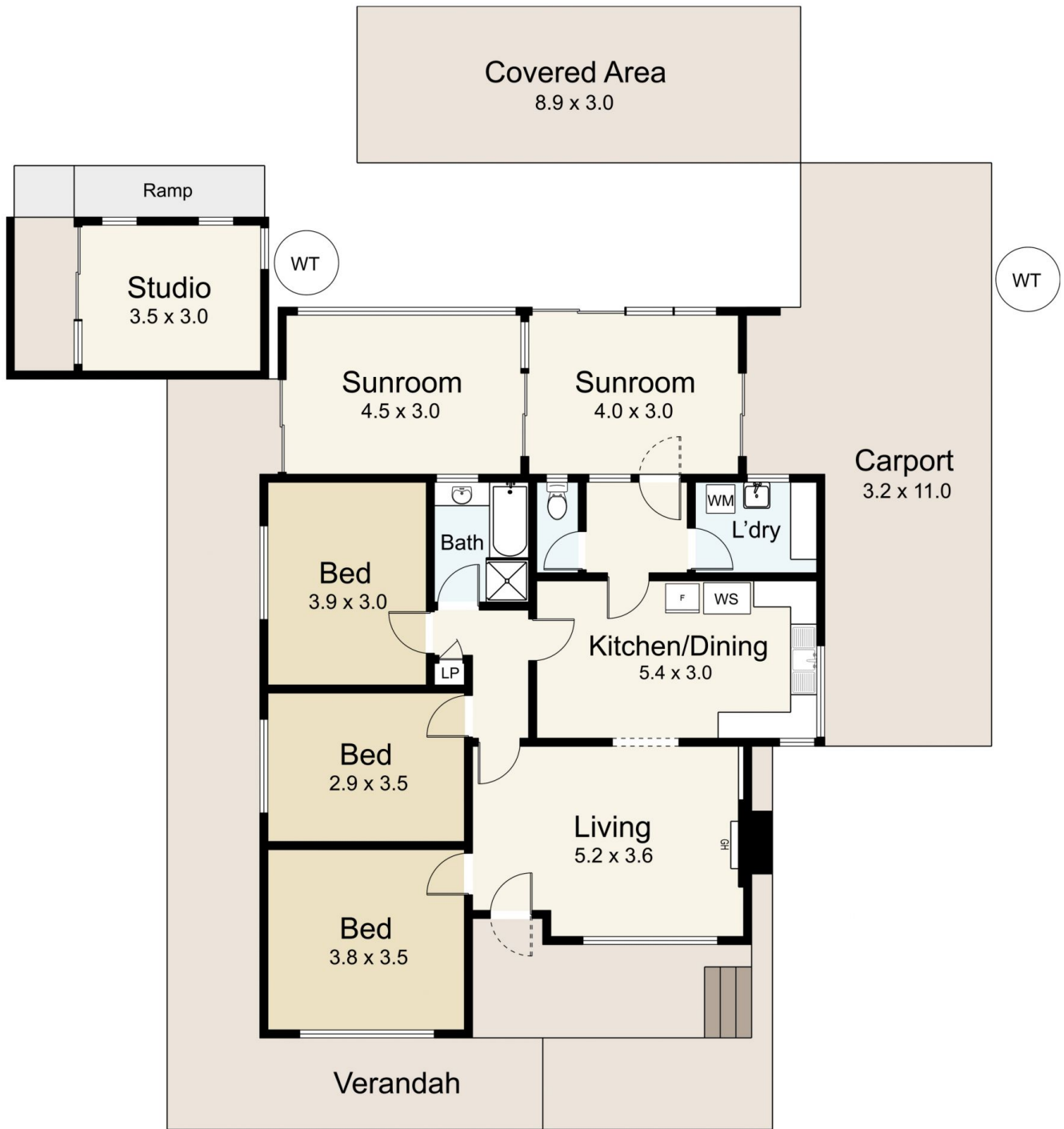
The home features direct entry from the front wrap-around verandah into the living room with period features that include large windows overlooking the borrowed landscape and a brick fireplace with a gas inset heater (bottled gas) before leading into the kitchen and dining where the period details continue with a wood stove and cabinetry. The spacious three bedrooms have large timber-framed



**Tom Robertson**  
03 5472 1133



**Megan Walmsley**  
03 5472 1133



## 37 Boundary Road, Maldon

SCALE UNIT IS IN METRES  
All measurements are approximate and for illustration purposes only. It should not be considered 100% accurate. Interested parties should rely on their own enquiries.

Residence - 122m<sup>2</sup>  
Studio - 11m<sup>2</sup>