



13 Lyttleton Street Castlemaine VIC

4 1 2

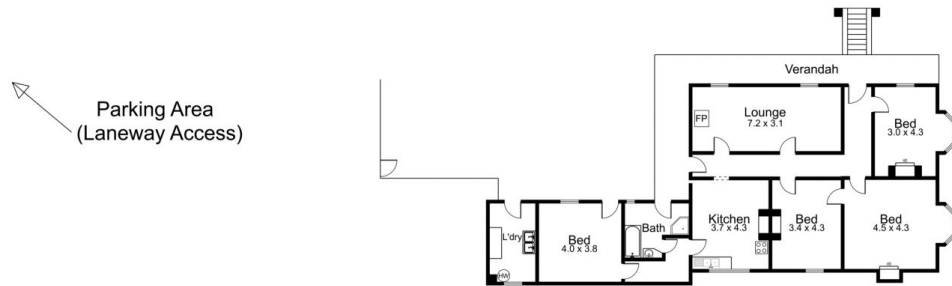
This newly renovated four-bedroom period home is in the hub of central Castlemaine. Light and bright with open fireplaces the home features include freshly polished floorboards, a renovated kitchen with an integrated dishwasher, a new freestanding gas cooktop with an oven, new blinds and views over central Castlemaine. Central to the home is a family bathroom, an external laundry and car parking at the rear with access from Templeton Street. Walking distance to train station, shops and everything Castlemaine has to offer.

Type : House

View : <https://www.cantwellproperty.com.au/lease/vic/gr-eater-bendigo-region/castlemaine/residential/house/7804997>



Michael Cantwell
03 5472 1133



13 Lyttleton Street, Castlemaine

Residence - 157m²

SCALE UNIT IS IN METRES
All measurements are approximate and for illustration purposes only. It should not be considered 100% accurate. Interested parties should rely on their own enquiries.