



1/31 Berkeley Street Castlemaine VIC

2 1 1

On the market for just the second time since being built in 1985, this two-bedroom brick unit is in an ideal location, surrounded by the beautiful treelined Plane trees on both Hargraves and Berkeley Streets. A short stroll into central Castlemaine for retail, amenities and the train station, with the Dove Cafe, the Castlemaine Bowling Club and the Croquet Club down the road, making this a crackerjack of a unit. This secure, tightly held property is one of four and two are owner-occupied, perfect for the downsizer or savvy investor!

Neat as a pin and solid as a rock, the unit comprises entry into a central hall flanked by two generous private bedrooms overlooking Berkeley Street, with built-in robes, before opening into the spacious open-plan living with dining and adjoining kitchen. A large window in the living space frames the garden facing Hargraves Street, the

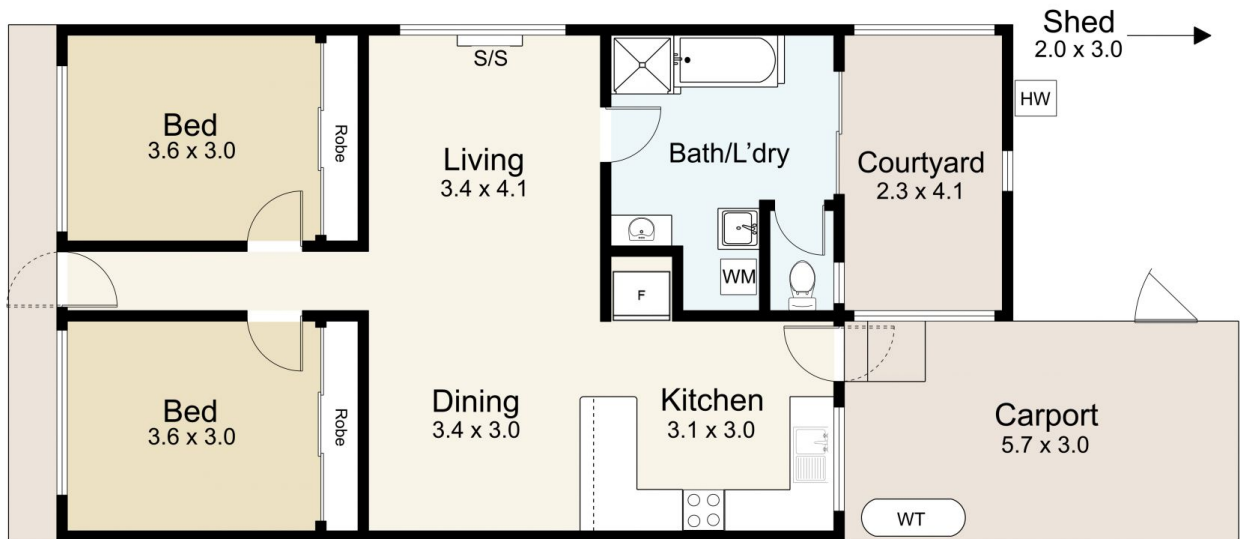
Price : \$ 498,000
Building Size : 84 sqm
View : <https://www.cantwellproperty.com.au/sale/vic/greater-bendigo-region/castlemaine/residential/unit/7789761>



Megan Walmsley
03 5472 1133



Tom Robertson
03 5472 1133



1/31 Berkeley Street, Castlemaine

SCALE UNIT IS IN METRES

All measurements are approximate and for illustration purposes only. It should not be considered 100% accurate. Interested parties should rely on their own enquiries.

Residence - 84m²

