



46 Berkeley Street Castlemaine VIC

4 🏠 2 🚗 3 🚗

In the pretty tree-lined Berkeley Street sits Heron House c 1893, a double-fronted Victorian home with the classic bull-nosed verandah, beautifully restored and maintained, a property with the "wow" effect. Walking distance of the Castlemaine North Primary School, Kalimna Park and a short stroll into central Castlemaine for retail and additional amenities, this home is immaculate, private and move-in ready.

Price : \$1,385,000
Building Size : 162 sqm
Land Size : 1063 sqm
View : <https://www.cantwellproperty.com.au/sale/vic/greater-bendigo-region/castlemaine/residential/house/7778422>

A pathway leads from the front picket fence to the wrap-around verandah and into the central hall. Dominated by high ceilings, the home features two north-facing bedrooms with large windows overlooking the front garden, one with a built-in open robe and wall air conditioner and the second is used as a study. A third bedroom and a spacious bathroom with a bath, shower, vanity and toilet are opposite the main bedroom with double doors to the



Tom Robertson
03 5472 1133

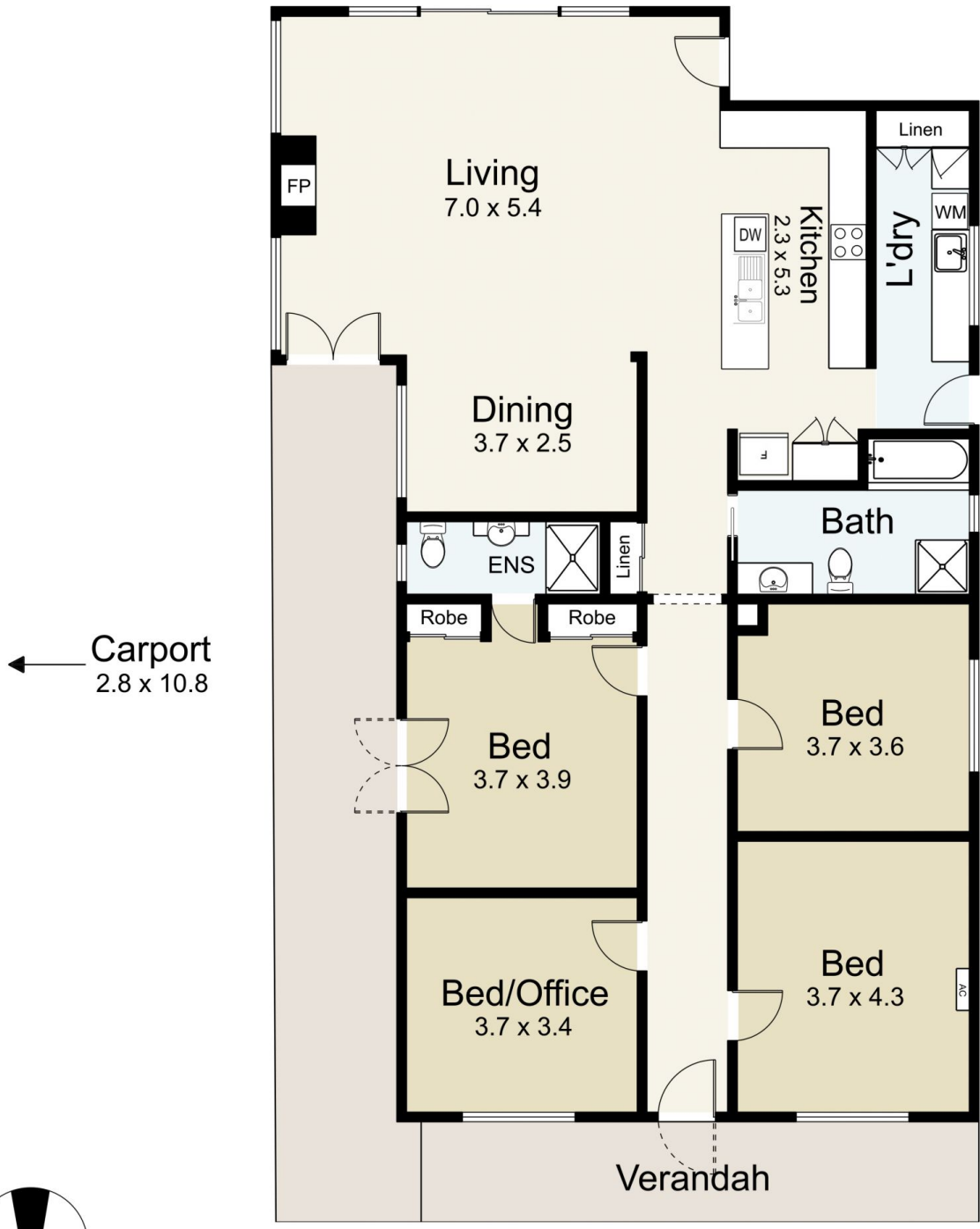


Megan Walmsley
03 5472 1133

Garage
3.6 x 6.4

Shed
3.5 x 6.4

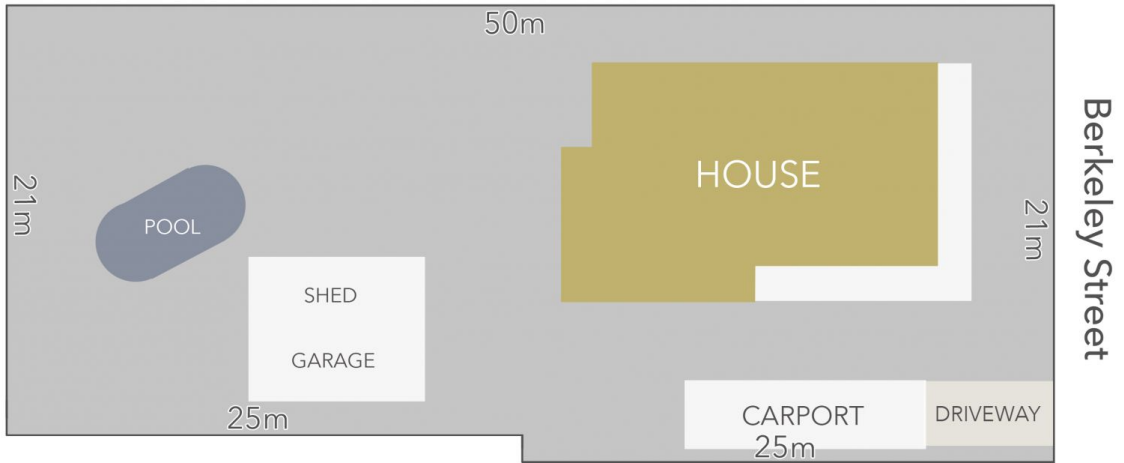
Pool
3.8 x 7.4



46 Berkeley Street, Castlemaine

SCALE UNIT IS IN METRES
 All measurements are approximate and for illustration purposes only. It should not be considered 100% accurate. Interested parties should rely on their own enquiries.

Residence - 162m²
 Garage/Shed - 45m²



LAND AREA : 1063m² (APPROX)

cantwell^{MM}
property castlemaine

46 Berkeley Street, Castlemaine

All Measurements & Details Shown Are Approximate Only.