

1/3 Maldon Road Castlemaine VIC

2 1 1

Modern Townhouse

This two bedroom unit features 9 foot ceilings, a large open plan living with a northerly aspect, kitchen with walk in pantry and lots of bench space, both bedrooms have built in robes, a large central bathroom and laundry. The unit has a single remote garage and a private rear courtyard and covered entertaining area, plus split system heating and cooling.

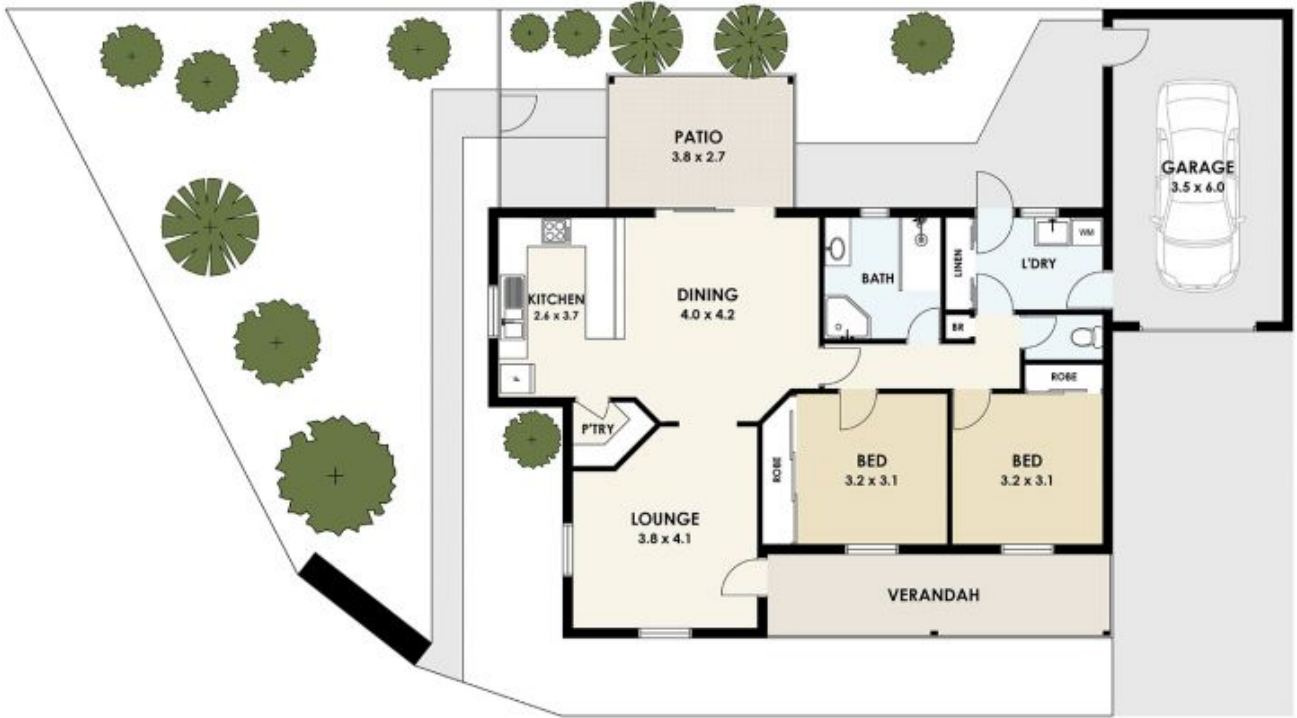
Land Size : 300 sqm
View : <https://www.cantwellproperty.com.au/lease/vic/greater-bendigo-region/castlemaine/residential/unit/7752289>



Brooke Ginnivan
0418 856 540



Laura Miller
0448 160 369



1/3 Maldon Road, Castlemaine

SCALE UNIT IS IN METERS

All measurements are approximate and for illustration purposes only. It should not be considered 100% accurate. Interested parties should rely on their own enquiries.

Residence - 94 m²
 Verandah - 12 m²
 Garage - 22 m²
 Patio - 10 m²

